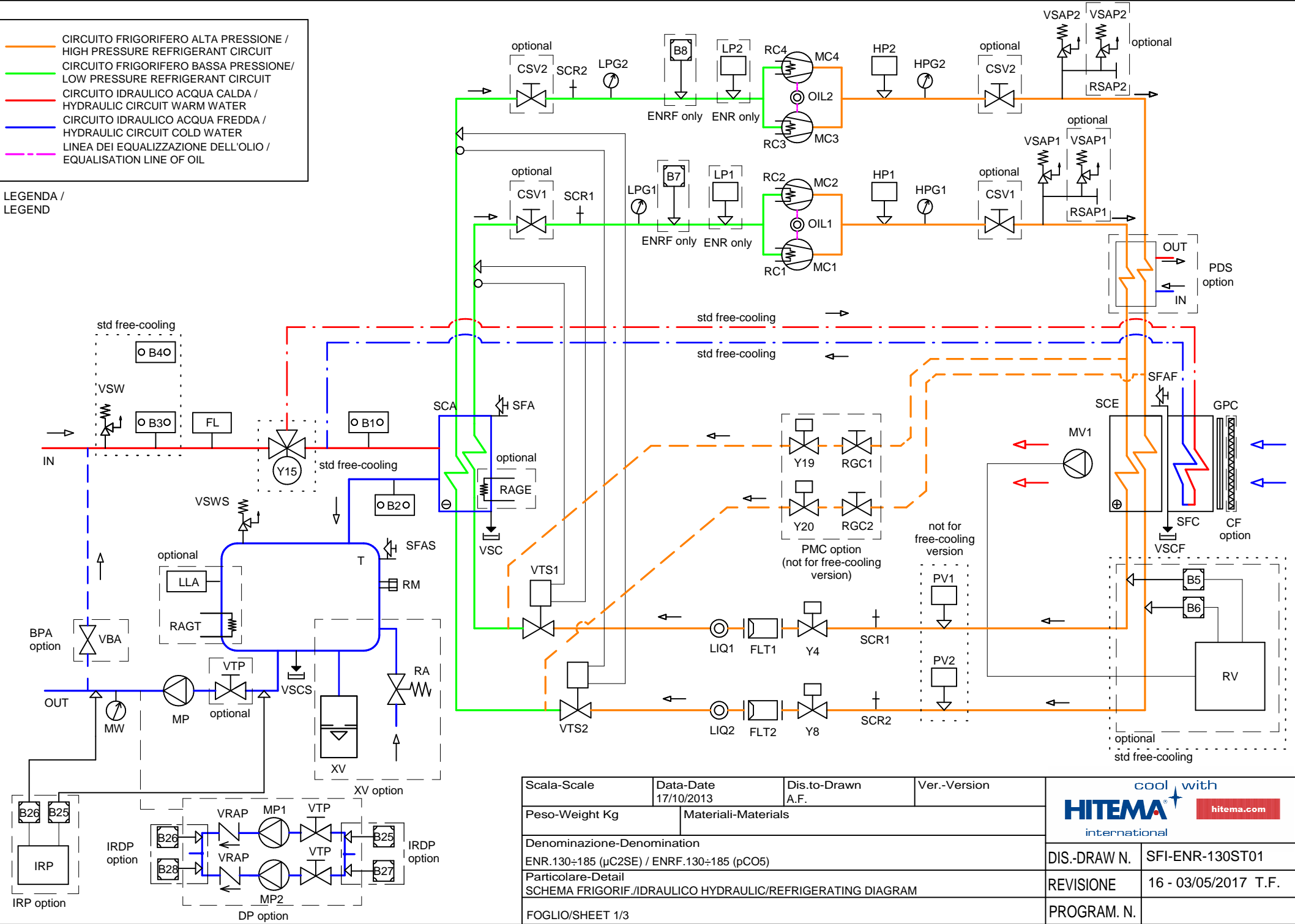


- CIRCUITO FRIGORIFERO ALTA PRESSIONE / HIGH PRESSURE REFRIGERANT CIRCUIT
- CIRCUITO FRIGORIFERO BASSA PRESSIONE / LOW PRESSURE REFRIGERANT CIRCUIT
- CIRCUITO IDRAULICO ACQUA CALDA / HYDRAULIC CIRCUIT WARM WATER
- CIRCUITO IDRAULICO ACQUA FREDDA / HYDRAULIC CIRCUIT COLD WATER
- - - LINEA DEI EQUALIZZAZIONE DELL'OLIO / EQUALISATION LINE OF OIL



LEGENDA /
LEGEND




Scala-Scale	Data-Date	Dis.to-Drawn	Ver.-Version	
	17/10/2013	A.F.		
Peso-Weight Kg	Materiali-Materials			DIS-DRAW N. SFI-ENR-130ST01
Denominazione-Denomination				REVISIONE
ENR.130÷185 (µC2SE) / ENRF.130÷185 (pCO5)				16 - 03/05/2017 T.F.
Particolare-Detail				PROGRAM. N.
SCHEMA FRIGORIF./IDRAULICO HYDRAULIC/REFRIGERATING DIAGRAM				
FOGLIO/SHEET 1/3				

CIRCUITO IDRICO / HYDRAULIC CIRCUIT

SIGLA	DESCRIZIONE	DESCRIPTION	MODELS
B4	TEMPERATURA AMBIENTE	AMBIENT TEMPERATURE SENSOR	std free cooling
VSW	VALVOLA SICUREZZA ACQUA	SAFETY WATER VALVE	std free cooling
B3	TEMPERATURA ACQUA FREE COOLING	FREE COOLING WATER TEMPERATURE	std free cooling
FL	FLUSSOSTATO	FLOW SWITCH	std
Y15	VALVOLA 3 VIE FREE COOLING	FREE COOLING 3 WAY VALVE	std free cooling
B1	TEMPERATURA ACQUA INGRESSO EVAPORATORE	EVAPORATOR INLET TEMPERATURE SENSOR	std
SCA	SCAMBIATORE DI CALORE AD ACQUA (EVAPORATORE A FASCIO)	WATER HEAT EXCHANGER (SHELL & TUBE EVAPORATOR)	std
VSC	VALVOLA DI SCARICO ACQUA	DISCHARGE WATER VALVE	std
SFA	SFIATO ARIA MANUALE	MANUAL AIR VENT	std
RAGE	RESISTENZA ANTIGELO EVAPORATORE	EVAPORATOR ANTIFREEZE HEATER	optional
B2	TEMPERATURA ACQUA USCITA EVAPORATORE	EVAPORATOR OUTLET TEMPERATURE SENSOR	std
T	SERBATOIO DI ACCUMULO	TANK	std
RM	TAPPO DI RIEMPIMENTO MANUALE	MANUAL FILLING CAP	std
VSWS	VALVOLA SICUREZZA SERBATOIO	TANK SAFETY VALVE	std
VSCS	VALVOLA DI SCARICO ACQUA DEL SERBATOIO	DISCHARGE WATER VALVE FOR TANK	std
SFAS	SFIATO ARIA SERBATOIO	AIR VENT FOR TANK	manual for std (automatic with XV option)
LLA	ALLARME BASSO LIVELLO ACQUA	ELECTRIC FLOAT LOW LEVEL ALARM	optional
RAGT	RESISTENZA ANTIGELO VASCA	ANTIFREEZE HEATER INERTIAL TANK	optional
XV	VASO DI ESPANSIONE	EXPANSION VESSEL	optional (included in the XV option)
RA	RIEMPIMENTO AUTOMATICO CON VALVOLA DI RITEGNO E FILTRO INCLUSO	AUTOMATIC FEEDER WITH CHECK VALVE AND FILTER INCORPORATED	optional (included in the XV option)
MP	ELETTROPOMPA DI PROCESSO	PROCESSING PUMP	std
MW	MANOMETRO ACQUA	WATER PRESSURE GAUGE	std
BPA	BYPASS AUTOMATICO INTERNO	INTERNAL AUTOMATIC BYPASS	optional
VBA	VALVOLA DI BYPASS AUTOMATICO	AUTOMATIC BYPASS VALVE	optional (included in the BPA option)
MP1-MP2	ELETTROPOMPA DI PROCESSO	PROCESSING PUMP	optional (included in the DP option)
VRAP	VALVOLA DI NON RITORNO ACQUA	NO RETURN WATER VALVE	optional (included in the DP option)
VTP	VALVOLA DI INTERCETTAZIONE TRA VASCA E POMPA	SHUT OFF VALVE BETWEEN TANK AND PUMP	optional (included in the DP option)
SFC	SCAMBIATORE ARIA ACQUA (FREE COOLING)	AIR-WATER EXCHANGER (FREE COOLING)	std free cooling
VSCF	VALVOLA DI SCARICO ACQUA FREE COOLING	FREE COOLING DISCHARGE WATER VALVE	std free cooling
SFAF	SFIATO ARIA MANUALE FREE COOLING	FREE COOLING MANUAL AIR VENT	std free cooling
B25÷B26	TRASDUTTORE DI PRESSIONE POMPA 1	PRESSURE TRADSUCER PUMP 1	optional (included in the I IRP/IRDP option)
B27÷B28	TRASDUTTORE DI PRESSIONE POMPA 2	PRESSURE TRADSUCER PUMP 2	optional (included in the IRDP option)
IRP	REGOLATORE A INVERTER PER POMPA	INVERTER CONTROL FOR PUMP	optional
IRDP	REGOLATORE A INVERTER INDIVIDUALE PER DOPPIA POMPA	INDIVIDUAL INVERTER CONTROL FOR DOUBLE PUMP	optional




	CIRCUITO IDRAULICO ACQUA CALDA / HYDRAULIC CIRCUIT WARM WATER
	CIRCUITO IDRAULICO ACQUA FREDDA / HYDRAULIC CIRCUIT COLD WATER

LEGENDA /
LEGEND


Scala-Scale	Data-Date 17/10/2013	Dis.to-Drawn A.F.	Ver.-Version		
Peso-Weight Kg	Materiali-Materials				
Denominazione-Denomination ENR.130÷185 (µC2SE) / ENRF.130÷185 (pCO5)				DIS-DRAW N.	SFI-ENR-130ST01
Particolare-Detail SCHEMA FRIGORIF./IDRAULICO HYDRAULIC/REFRIGERATING DIAGRAM				REVISIONE	16 - 03/05/2017 T.F.
FOGLIO/SHEET 2/3				PROGRAM. N.	

CIRCUITO FRIGORIFERO STANDARD / STANDARD REFRIGERATING CIRCUIT

SIGLA	DESCRIZIONE	DESCRIPTION	MODELS
MC1÷MC4	COMPRESSORE	COMPRESSOR	std
RC1÷RC4	RESISTENZA CARTER COMPRESSORE	COMPRESSOR CRANKCASE HEATER	std
OIL1÷2	SPIA DI FLUSSO LINEA EQUALIZZAZIONE OLIO	SIGHT GLASS FOR EQUALISATION LINE OF OIL	std
HP1÷2	PRESSOSTATO ALTA PRESSIONE	HIGH PRESSURE SWITCH	std
HPG1÷2	MANOMETRO ALTA PRESSIONE	HIGH PRESSURE GAUGE	std
VSAP1÷2	VALVOLA DI SICUREZZA LINEA DI ALTA PRESSIONE	HIGH PRESSURE SAEFTY VALVE	std
RSAP1÷2	VALVOLA DI COMMUTAZIONE LINEA ALTA PRESSIONE	HIGH PRESSURE CHANGEOVER VALVE	std
CSV1÷2	VALVOLA DI INTERCETTAZIONE COMPRESSORI	COMPRESSORS SHUT OFF VALVE	optional
PDS	DESURRISCALDATORE PARTIALE	PARTIAL DESUPERHEATER	optional
SCE	SCAMBIATORE DI CALORE AD ARIA (CONDENSATORE)	AIR HEAT EXCHANGER (CONDENSER)	std
GPC	GRIGLIA PROTEZIONE CONDENSATORE	CONDENSER GRID PROTECTION	std
CF	FILTRO ARIA CONDENSATORE	AIR CONDENSER FILTER	optional
MV1	MOTOVENTILATORE ASSIALE	AXIAL FAN MOTOR	std AC fans (available EC fans option)
B5÷6	TRASDUTTORE ALTA PRESSIONE	HIGH PRESSURE TRASDUCER	optional (std free cooling)
RV	REGOLATORE DI VELOCITA' VENTILATORI	FAN SPEED REGULATOR	optional (std free cooling)
PV1÷2	PRESSOSTATO VENTILATORI	FAN PRESSURE SWITCH	std (not available for free cooling version)
SCR1÷2	VALVOLA DI CARICO SCHRADER	CHARGE VALVE (SCHRADER)	std
Y4÷8	VALVOLA SOLENOIDE LIQUIDO CIRCUITO	SOLENOID-VALVE FOR LIQUID LINE	std
FLT1÷2	FILTRO DISIDRATATORE CIRCUITO REFRIGERANTE	DEHYDRATING FILTER FOR LIQUID LINE	std
LIQ1÷2	SPIA DI FLUSSO / INDICATORE DI LIQUIDO	LIQUID INDICATOR / SIGHT GLASS FOR LIQUID LINE	std
VTS1÷2	VALVOLA DI ESPANSIONE TERMOSTATICA	THERMOSTATIC EXPANSION VALVE	std
SCA	SCAMBIATORE DI CALORE AD ACQUA (EVAPORATORE A FASCIO)	WATER HEAT EXCHANGER (SHELL & TUBE EVAPORATOR)	std
CSV1÷2	VALVOLA DI INTERCETTAZIONE COMPRESSORI	COMPRESSORS SHUT OFF VALVE	optional
SCR1÷2	VALVOLA DI CARICO SCHRADER	CHARGE VALVE (SCHRADER)	std
LPG1÷2	MANOMETRO BASSA PRESSIONE	LOW PRESSURE GAUGE	std
LP1÷2	PRESSOSTATO DI BASSA PRESSIONE	LOW PRESSURE SWITCH	std (ENR only)
B7÷B8	TRASDUTTORE BASSA PRESSIONE	LOW PRESSURE TRASDUCER	std (ENRF only)
PMC	BYPASS GAS CALDO	HOT GAS BYPASS	optional (not available for free cooling version)
RGC1÷2	RUBINETTO GAS CALDO	HOT GAS SHUT OFF VALVE	optional (included in the PMC option)
Y19-Y20	ELETTOVALVOLA BYPASS GAS CALDO	HOT GAS BYPASS VALVE (SOLENOIDE VALVE)	optional (included in the PMC option)

	CIRCUITO FRIGORIFERO ALTA PRESSIONE / HIGH PRESSURE REFRIGERANT CIRCUIT
	CIRCUITO FRIGORIFERO BASSA PRESSIONE / LOW PRESSURE REFRIGERANT CIRCUIT
	LINEA DEI EQUALIZZAZIONE DELL'OLIO / EQUALISATION LINE OF OIL

LEGENDA /
LEGEND

Scala-Scale	Data-Date 17/10/2013	Dis.to-Drawn A.F.	Ver.-Version	
Peso-Weight Kg	Materiali-Materials			
Denominazione-Denomination ENR.130÷185 (µC2SE) / ENRF.130÷185 (pCO5)				DIS-DRAW N. SFI-ENR-130ST01
Particolare-Detail SCHEMA FRIGORIF./IDRAULICO HYDRAULIC/REFRIGERATING DIAGRAM				REVISIONE 16 - 03/05/2017 T.F.
FOGLIO/SHEET 3/3				PROGRAM. N.