

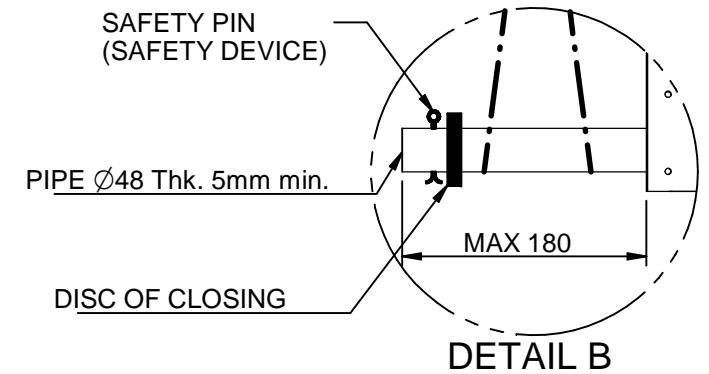
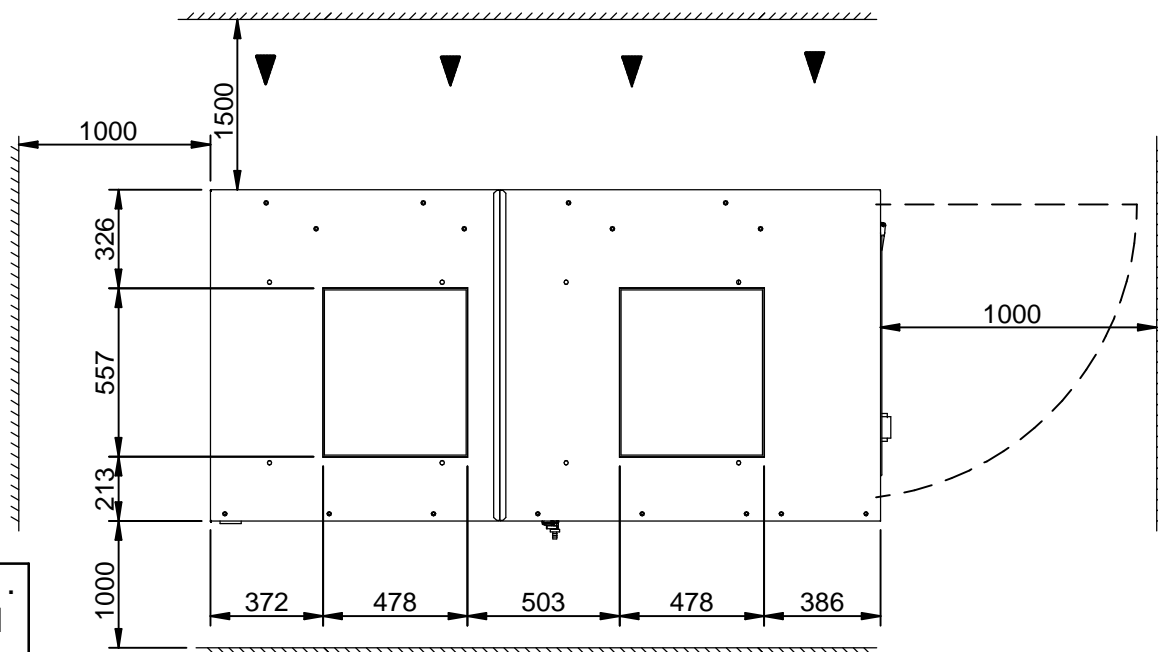
(*) MAKE STRAIGHT PIPING FOR AIR FOR EACH FAN WITH SAME DIMENSION OF FAN DELIVERY AND WITH A LENGTH BIGGER THAN 2 METERS

LEGEND

HPG	High pressure gauge
LPG	Low pressure gauge
MW	Water pressure gauge
RM	Manual water filling cap
SFA	Manual air vent
VSC	Water drain valve
ATV	Rubber type antivibrant mounting (Opt)

LIFTING AND CARRIAGE PRECAUTIONS

- Check the weight on the CE label to select appropriate lift equipment .
- Before lifting the unit make sure that the external panel is firmly fixed in place.
- To use only lifting points provided.
- The chains or slings must be of equal length.
- To use a spread-bar to avoid damage to the unit.
- The movement must be performed with caution and avoid abrupt movements.
- Never move the unit on rollers.



MOD.	EMPTY WEIGHT	OPERATING WEIGHT
CSE.100	990 kg	1410 kg

Scala-Scale	Data-Date	Dis.to-Drawn	N°Pezzi
	20/07/15	M. M.	
Peso-Weight Kg.	Materiali-Materials		
Denominazione-Denomination			
WATER CHILLERS mod. CSE.100			
Particolare-Detail			
Overall dimension - Lift Instruction			
REFRIGERANT R410a			



DIS.-DRAW N.	DIM-CSE-100ST01
Rev.	01-M.M.-17/01/17
PROGRAM.N.	