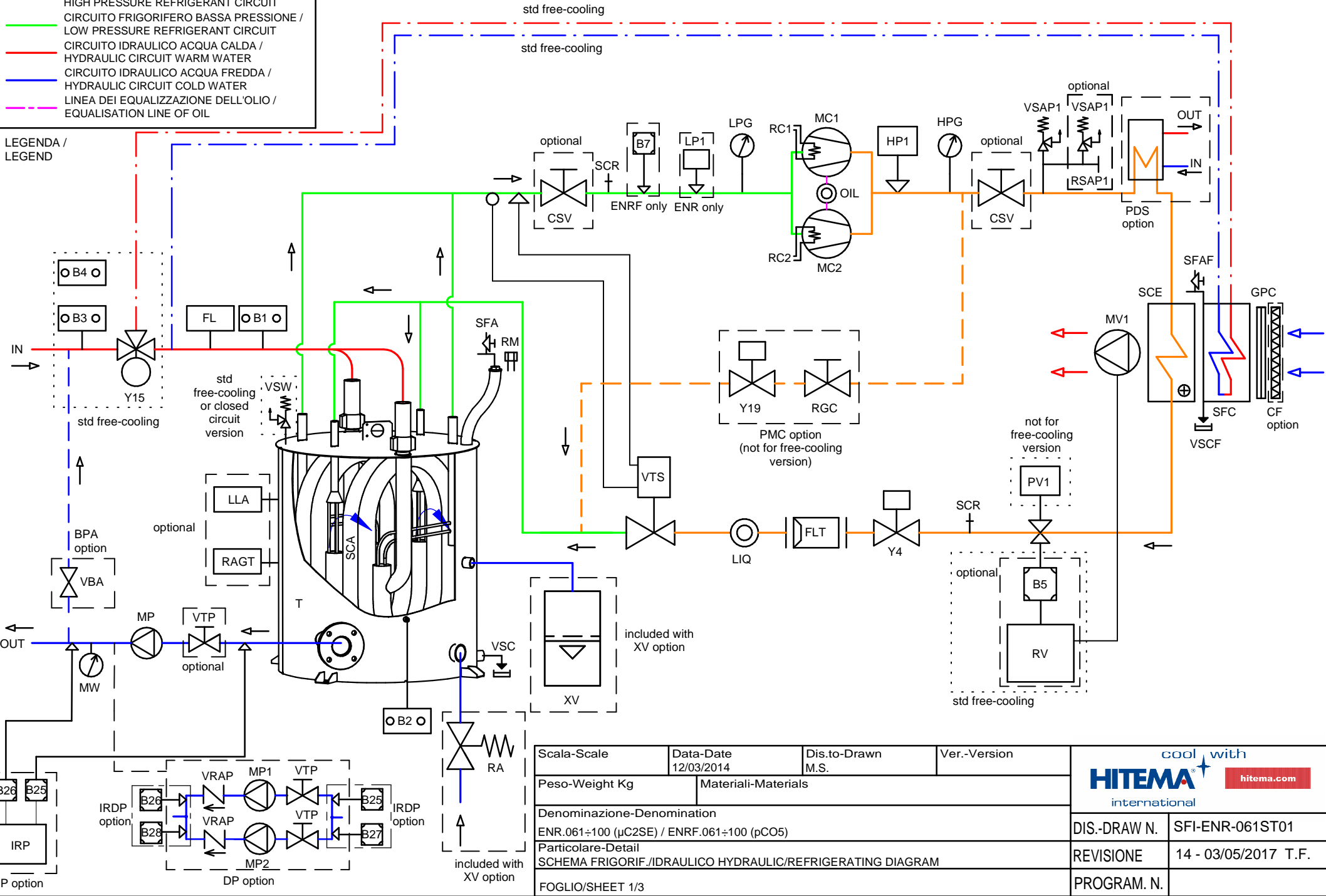



- CIRCUITO FRIGORIFERO ALTA PRESSIONE / HIGH PRESSURE REFRIGERANT CIRCUIT
- CIRCUITO FRIGORIFERO BASSA PRESSIONE / LOW PRESSURE REFRIGERANT CIRCUIT
- CIRCUITO IDRAULICO ACQUA CALDA / HYDRAULIC CIRCUIT WARM WATER
- CIRCUITO IDRAULICO ACQUA FREDDA / HYDRAULIC CIRCUIT COLD WATER
- LINEA DEI EGUALIZZAZIONE DELL'OLIO / EQUALISATION LINE OF OIL

LEGENDA / LEGEND





Scala-Scale	Data-Date	Dis.to-Drawn	Ver.-Version
	12/03/2014	M.S.	
Peso-Weight Kg	Materiali-Materials		
Denominazione-Denomination			
ENR.061÷100 (µC2SE) / ENRF.061÷100 (pCO5)			
Particolare-Detail			
SCHEMA FRIGORIF./IDRAULICO HYDRAULIC/REFRIGERATING DIAGRAM			
FOGLIO/SHEET 1/3			


	
DIS-DRAW N.	SFI-ENR-061ST01
REVISIONE	14 - 03/05/2017 T.F.
PROGRAM. N.	

## CIRCUITO IDRICO / HYDRAULIC CIRCUIT

SIGLA	DESCRIZIONE	DESCRIPTION	MODELS
B4	TEMPERATURA AMBIENTE	AMBIENT TEMPERATURE SENSOR	std free cooling
B3	TEMPERATURA ACQUA FREE COOLING	FREE COOLING WATER TEMPERATURE SENSOR	std free cooling
Y15	VALVOLA A 3 VIE FREE COOLING	FREE COOLING 3 WAY VALVE	std free cooling
SFC	SCAMBIATORE ARIA ACQUA (FREE COOLING)	AIR-WATER EXCHANGER (FREE COOLING)	std free cooling
VSCF	VALVOLA DI SCARICO ACQUA FREE COOLING	FREE COOLING DISCHARGE WATER VALVE	std free cooling
SFAF	SFIATO ARIA MANUALE FREE COOLING	FREE COOLING MANUAL AIR VENT	std free cooling
FL	FLUSSOSTATO	FLOW SWITCH	std
B1	TEMPERATURA ACQUA INGRESSO EVAPORATORE	EVAPORATOR INLET TEMPERATURE SENSOR	std
SCA	SCAMBIATORE DI CALORE AD ACQUA (EVAPORATORE COASSIALE)	WATER HEAT EXCHANGER (COAXIAL EVAPORATOR)	std
B2	TEMPERATURA ACQUA USCITA EVAPORATORE	EVAPORATOR OUTLET TEMPERATURE SENSOR	std
T	SERBATOIO DI ACCUMULO	TANK	std
RM	TAPPO DI RIEMPIMENTO MANUALE	MANUAL FILLING CAP	std
VSW	VALVOLA SICUREZZA ACQUA	SAFETY WATER VALVE	std free cooling or in closed circuit version
VSC	VALVOLA DI SCARICO ACQUA	DISCHARGE WATER VALVE	std
SFA	SFIATO ARIA	AIR VENT	manual for std (automatic with XV option)
LLA	ALLARME BASSO LIVELLO ACQUA	ELECTRIC FLOAT LOW LEVEL ALARM	optional
RAGT	RESISTENZA ANTIGELO VASCA	ANTIFREEZE HEATER INERTIAL TANK	optional
XV	VASO DI ESPANSIONE	EXPANSION VESSEL	optional (included in the XV option)
RA	RIEMPIMENTO AUTOMATICO CON VALVOLA DI RITEGNO E FILTRO INCLUSO	AUTOMATIC FEEDER WITH CHECK VALVE AND FILTER INCORPORATED	optional (included in the XV option)
MP	ELETTROPOMPA DI PROCESSO	PROCESSING PUMP	std
MW	MANOMETRO ACQUA	WATER PRESSURE GAUGE	std
VBA	VALVOLA DI BYPASS AUTOMATICO	AUTOMATIC BYPASS VALVE	optional (included in the BPA option)
BPA	BYPASS AUTOMATICO	AUTOMATIC BYPASS	optional
VTP	VALVOLA DI INTERCETTAZIONE TRA VASCA E POMPA	SHUT OFF VALVE BETWEEN TANK AND PUMP	optional
MP1-MP2	ELETTROPOMPA DI PROCESSO	PROCESSING PUMP	optional (included in the DP option)
VRAP	VALVOLA DI NON RITORNO ACQUA	NO RETURN WATER VALVE	optional (included in the DP option)
B25-B26	TRASDUTTORE DI PRESSIONE POMPA 1	PRESSURE TRASDUCER PUMP 1	optional (included in the IRP/IRDP option)
B27-B28	TRASDUTTORE DI PRESSIONE POMPA 2	PRESSURE TRASDUCER PUMP 2	optional (included in the IRDP option)
IRP	REGOLATORE A INVERTER PER POMPA	INVERTER CONTROL FOR PUMP	optional
IRDP	REGOLATORE A INVERTER INDIVIDUALE PER DOPPIA POMPA	INDIVIDUAL INVERTER CONTROL FOR DOUBLE PUMP	optional




	CIRCUITO IDRAULICO ACQUA CALDA / HYDRAULIC CIRCUIT WARM WATER
	CIRCUITO IDRAULICO ACQUA FREDDA / HYDRAULIC CIRCUIT COLD WATER

LEGENDA /  
LEGEND


Scala-Scale	Data-Date 12/03/2014	Dis.to-Drawn M.S.	Ver.-Version	 cool with international
Peso-Weight Kg	Materiali-Materials			
Denominazione-Denomination ENR.061÷100 (µC2SE) / ENRF.061÷100 (pCO5)				DIS-DRAW N. SFI-ENR-061ST01
Particolare-Detail SCHEMA FRIGORIF./IDRAULICO HYDRAULIC/REFRIGERATING DIAGRAM				REVISIONE 14 - 03/05/2017 T.F.
FOGLIO/SHEET 2/3				PROGRAM. N.

CIRCUITO FRIGORIFERO STANDARD / STANDARD REFRIGERATING CIRCUIT

SIGLA	DESCRIZIONE	DESCRIPTION	MODELS
MC1÷MC2	COMPRESSORE	COMPRESSOR	std
RC1÷2	RESISTENZA CARTER COMPRESSORE	COMPRESSOR CRANKCASE HEATER	std
OIL	SPIA DI FLUSSO LINEA EQUALIZZAZIONE OLIO	SIGHT GLASS FOR EQUALISATION LINE OF OIL	std
HP1	PRESSOSTATO ALTA PRESSIONE	HIGH PRESSURE SWITCH	std
HPG	MANOMETRO ALTA PRESSIONE	HIGH PRESSURE GAUGE	std
VSAP1	VALVOLA SICUREZZA ALTA PRESSIONE	HIGH PRESSURE SAFETY VALVE	std
RSAP1	VALVOLA DI COMMUTAZIONE LINEA ALTA PRESSIONE	HIGH PRESSURE CHANGEOVER VALVE	std
CSV	VALVOLA DI INTERCETTAZIONE COMPRESSORI	COMPRESSORS SHUT OFF VALVE	optional
PDS	DESURRISCALDATORE PARZIALE	PARTIAL DESUPERHEATER	optional
SCE	SCAMBIATORE DI CALORE AD ARIA (CONDENSATORE)	AIR HEAT EXCHANGER (CONDENSER)	std
GPC	GRIGLIA PROTEZIONE CONDENSATORE	CONDENSER GRID PROTECTION	std
CF	FILTRO ARIA CONDENSATORE	AIR CONDENSER FILTER	optional
MV1	MOTOVENTILATORE ASSIALE	AXIAL FAN MOTOR	std AC fans
PV1	PRESSOSTATO VENTILATORI	FAN PRESSURE SWITCH	std (not available for free cooling version)
B5	TRASDUTTORE ALTA PRESSIONE	HIGH PRESSURE TRASDUCER	optional (std free cooling)
RV	REGOLATORE DI VELOCITA' VENTILATORI	FAN SPEED REGULATOR	optional (std free cooling)
SCR	VALVOLA DI CARICO SCHRADER	CHARGE VALVE (SCHRADER)	std
Y4	VALVOLA SOLENOIDE LIQUIDO CIRCUITO	SOLENOID-VALVE FOR LIQUID LINE	std
FLT	FILTRO DISIDRATATORE CIRCUITO REFRIGERANTE	DEHYDRATING FILTER FOR LIQUID LINE	std
LIQ	SPIA DI FLUSSO / INDICATORE DI LIQUIDO	LIQUID INDICATOR / SIGHT GLASS FOR LIQUID LINE	std
VTS	VALVOLA DI ESPANSIONE TERMOSTATICA	THERMOSTATIC EXPANSION VALVE	std
SCA	SCAMBIATORE DI CALORE AD ACQUA (EVAPORATORE COASSIALE)	WATER HEAT EXCHANGER (COAXIAL EVAPORATOR)	std
CSV	VALVOLA DI INTERCETTAZIONE COMPRESSORI	COMPRESSORS SHUT OFF VALVE	optional
SCR	VALVOLA DI CARICO SCHRADER	CHARGE VALVE (SCHRADER)	std
LP1	PRESSOSTATO DI BASSA PRESSIONE	LOW PRESSURE SWITCH	std (ENR only)
B7	TRASDUTTORE BASSA PRESSIONE	LOW PRESSURE TRASDUCER	std (ENRF only)
LPG	MANOMETRO BASSA PRESSIONE	LOW PRESSURE GAUGE	std
PMC	BYPASS GAS CALDO	HOT GAS BYPASS	optional (not available for free cooling version)
RGC	RUBINETTO GAS CALDO	HOT GAS SHUT OFF VALVE	optional (included in the PMC option)
Y19	ELETTRIVALVOLA BYPASS GAS CALDO	HOT GAS BYPASS VALVE (SOLENOIDE VALVE)	optional (included in the PMC option)

	CIRCUITO FRIGORIFERO ALTA PRESSIONE / HIGH PRESSURE REFRIGERANT CIRCUIT
	CIRCUITO FRIGORIFERO BASSA PRESSIONE / LOW PRESSURE REFRIGERANT CIRCUIT
	LINEA DEI EQUALIZZAZIONE DELL'OLIO / EQUALISATION LINE OF OIL

LEGENDA /  
LEGEND

Scala-Scale	Data-Date 12/03/2014	Dis.to-Drawn M.S.	Ver.-Version		
Peso-Weight Kg	Materiali-Materials				
Denominazione-Denomination ENR.061÷100 (µC2SE) / ENRF.061÷100 (pCO5)				DIS-DRAW N.	SFI-ENR-061ST01
Particolare-Detail SCHEMA FRIGORIF./IDRAULICO HYDRAULIC/REFRIGERATING DIAGRAM				REVISIONE	14 - 03/05/2017 T.F.
FOGLIO/SHEET 3/3				PROGRAM. N.	